

A man with a beard is sitting at a desk in a factory, working on a computer. He is looking at two monitors. The left monitor shows a 3D model of a complex mechanical part. The right monitor shows a software interface with various panels and data. In the background, there are several yellow robotic arms (KUKA) working on a production line. The factory has a high ceiling with metal beams and pipes.

T-FLEX DOCs

T-FLEX DOCs - PLM, Document
and Workflow Management

Protected Storage of Enterprise Data

ENGINEERING PROCESSED AND DESIGN MANAGEMENT

CUSTOMIZED INFORMATION SYSTEM

INTEGRATION WITH MAJOR MCAD SYSTEMS

GENERAL OFFICE AND DESK WORKFLOW

T·FLEX  **DOCs**
UNIFIED PROTECTED STORAGE
OF ENTERPRISE DATA

PRODUCT STRUCTURE MANAGEMENT, BILLOF
MATERIALS, CORPORATE DATA AND CLASSIFIERS

ENTERPRISE KNOWLEDGE MANAGEMENT AND ARCHIVE

MANAGING COMPANY PRODUCT RANGE, CORPORATE
DATA AND CLASSIFIERS

PROJECT MANAGEMENT, COST AND RESOURCE PLANING

MAIL AND TASKS, WORKFLOW MANAGMENT

INTEGRATION WITH ERP SYSTEMS

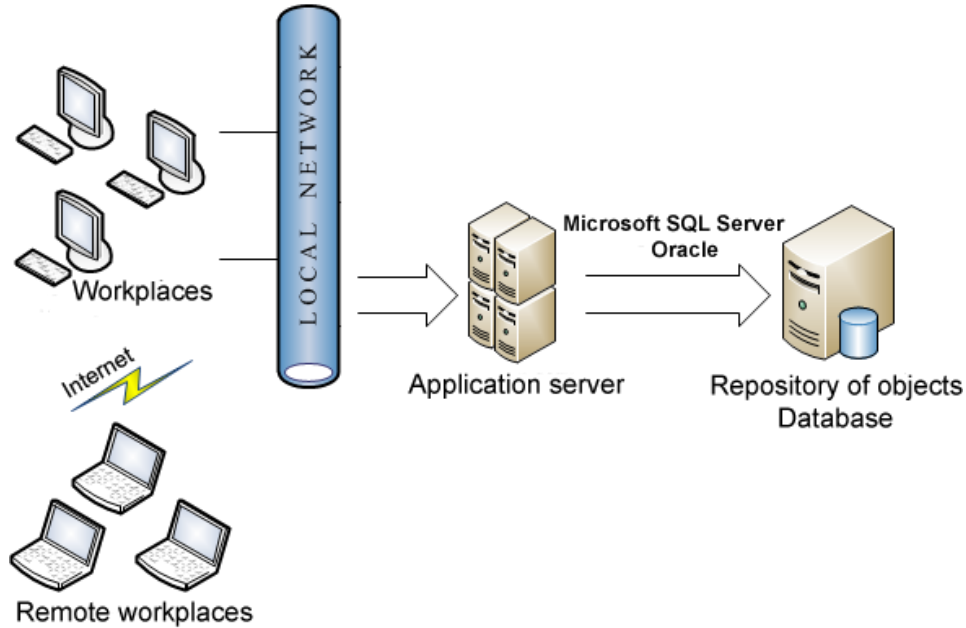
T·FLEX  **DOCs**

Strategy

T-FLEX DOCs delivers end-to-end data and process management providing an overall solution to manage a product's entire life cycle, linking data from CAD/CAM/CAE/VR/PDM applications.

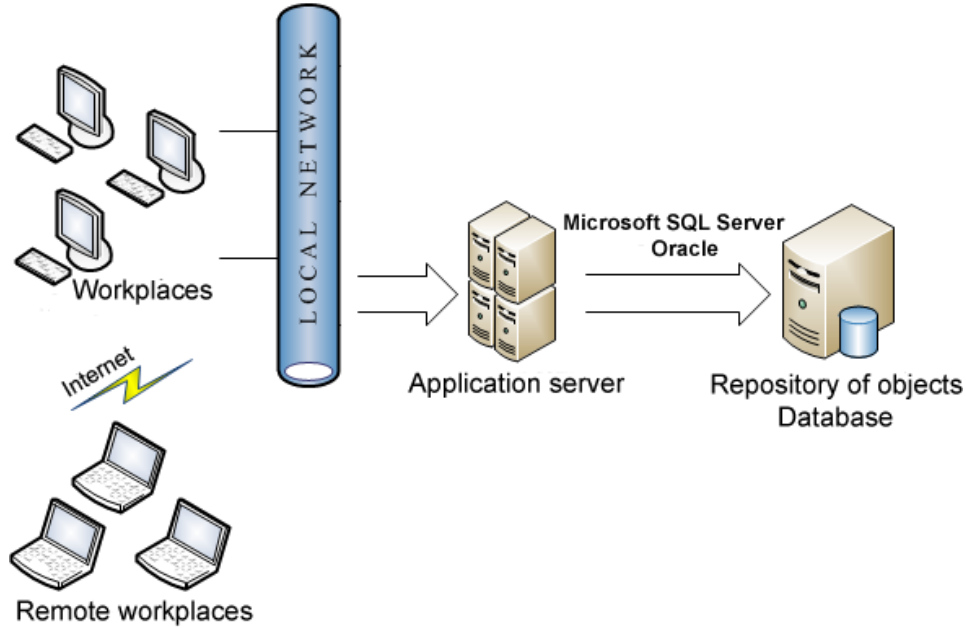
- ✓ Various specialized custom applications based on a single kernel
- ✓ Flexible configuration of data structures and user interface
- ✓ Ability to establish any relationship between the data to provide enterprise- wide collaboration
- ✓ Universal and specialized components to build specialized systems
- ✓ Full openness for adding any custom components
- ✓ Direct integration with CAD systems and other design applications

Architecture



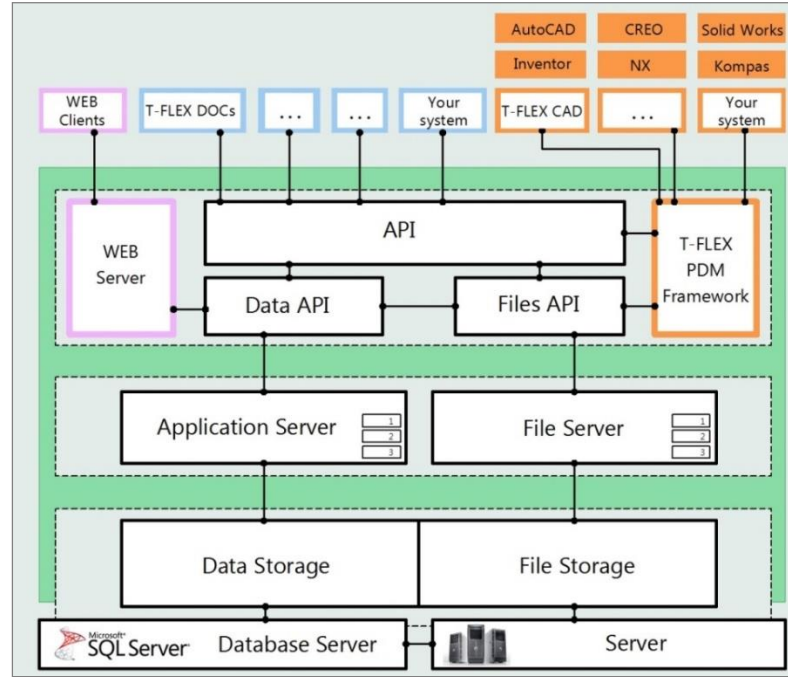
Three-level architecture constitutes the basis of T-FLEX DOCs model. This basically implies that all data used on work places is stored and processed on the server, and the user interface, i.e., client's place, allows the user only to display the data and initiate its processing.

Architecture



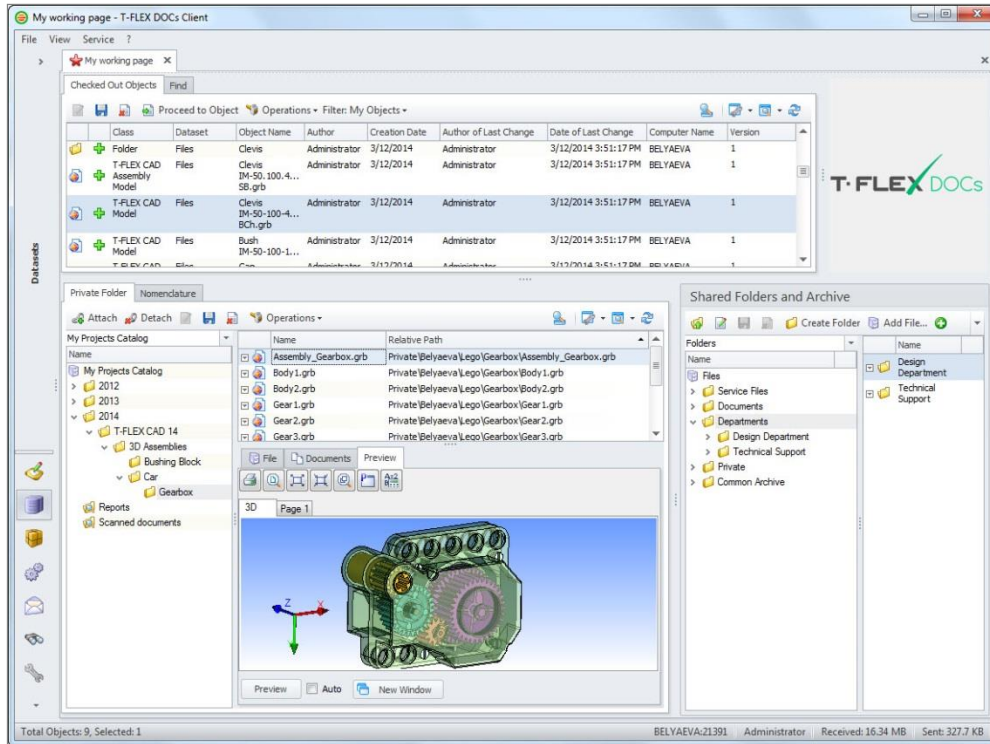
Interaction between the client and the server is carried out by the use of application server.

Architecture



An example of a typical T-FLEX DOCs system work organization within the limits of the local as well as global networks. T-FLEX DOCs system can adequately be used both in networks with a domain organization and in single-rank networks.

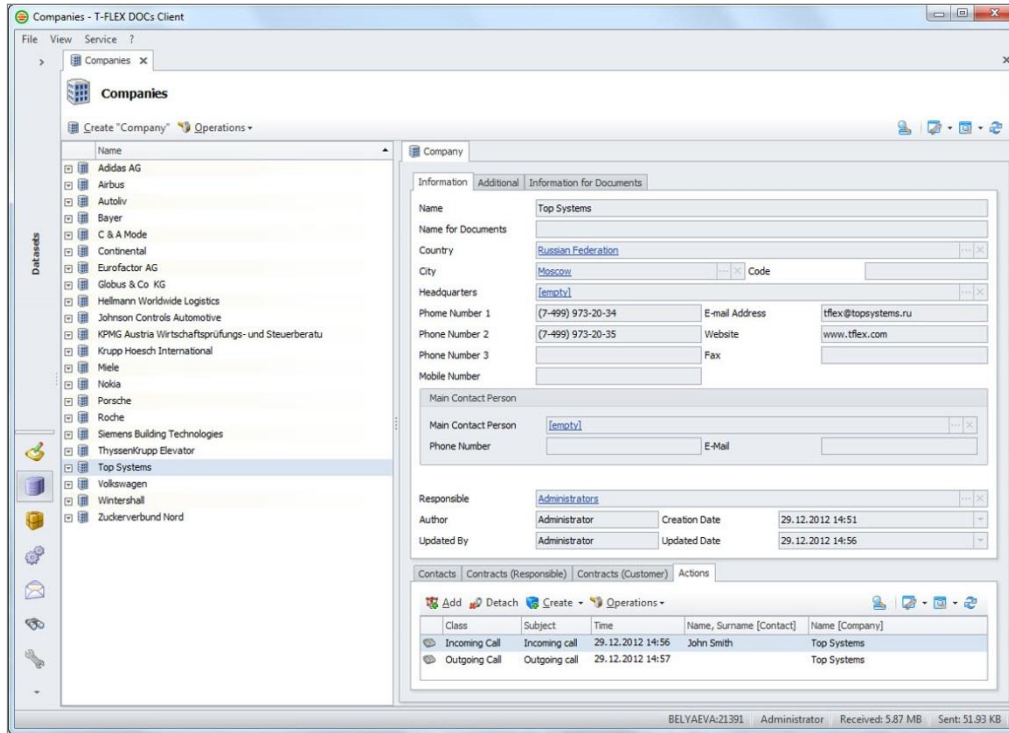
Designer Workplace



The system has a number of ready-made solutions for successful usage from the beginning.

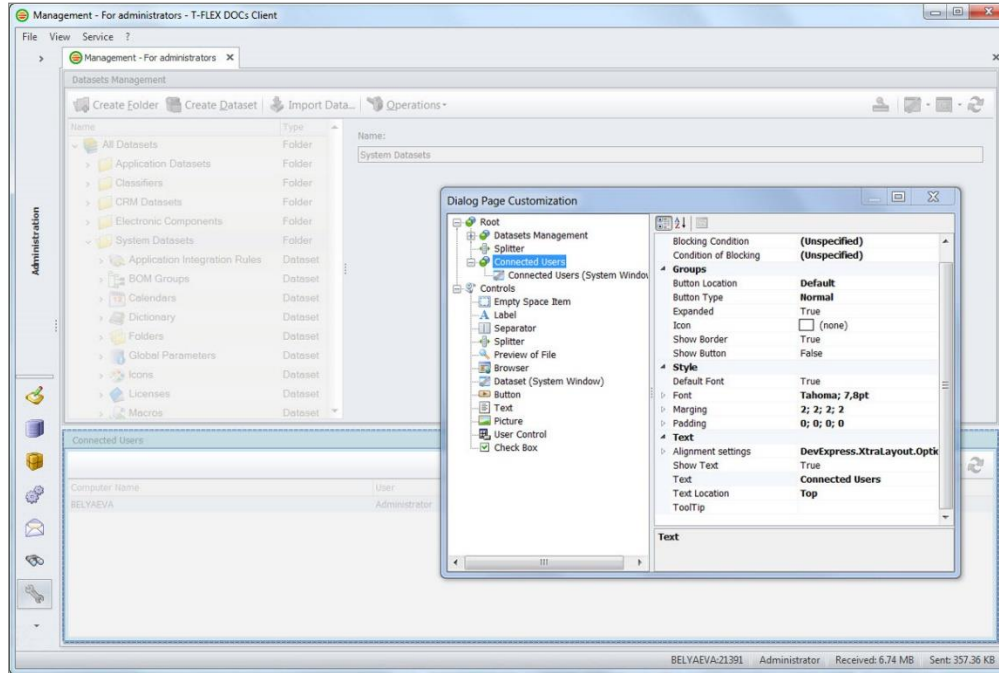
A typical example - the designer workplace.

Customer Relationship Management



- ✓ The classic document management software application – CRM, customer relationship management

Administrator Workplace



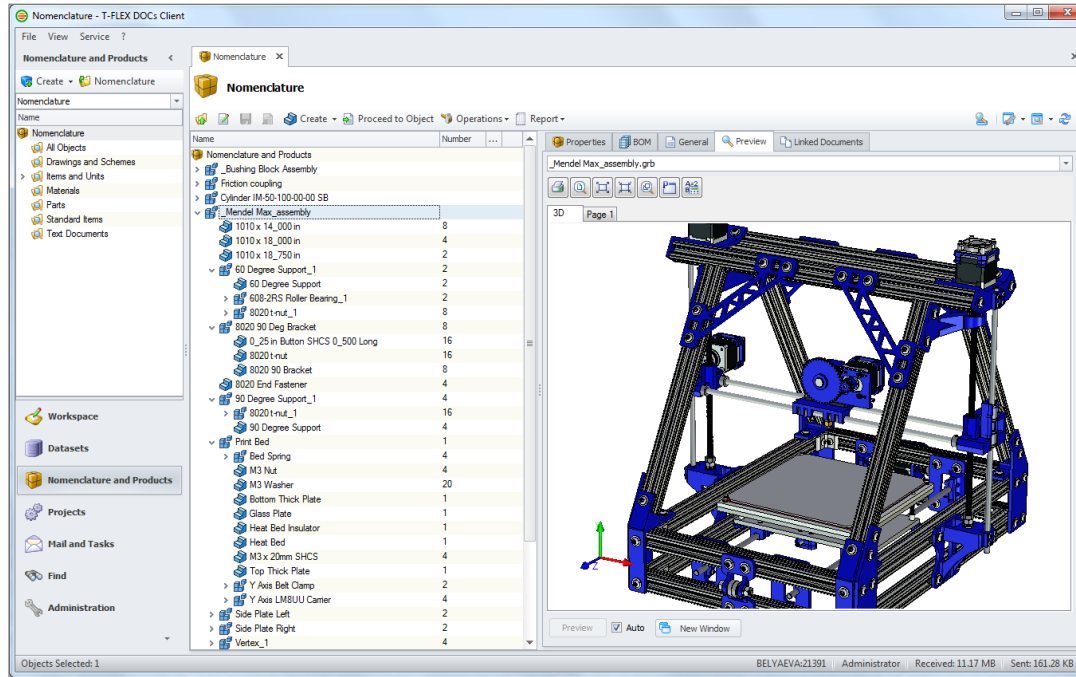
Administrator can configure his workplace and workplaces of employees to solve any problems, as well as quickly examine the current state of the system.

Nomenclature and Products

Nomenclature control and operations with product structure – key element of enterprise data management

- ✓ Product Structure development and maintenance
- ✓ Verify uniqueness and unparalleled selection when creating new objects
- ✓ Automatic logging of company nomenclature
- ✓ Automatic generation of bills of materials, statements and other reporting documents
- ✓ Keeping different versions of product structure
- ✓ Support for multiple representation of products (design, technology, etc.)
- ✓ Keeping history of design modifications with the ability to return to previous versions of parts and subassemblies

Keeping the Product Nomenclature



Nomenclature management is conveniently organized with easy window control, data viewing and search, filters, and more.
Special feature – setting the rules for uniqueness check.

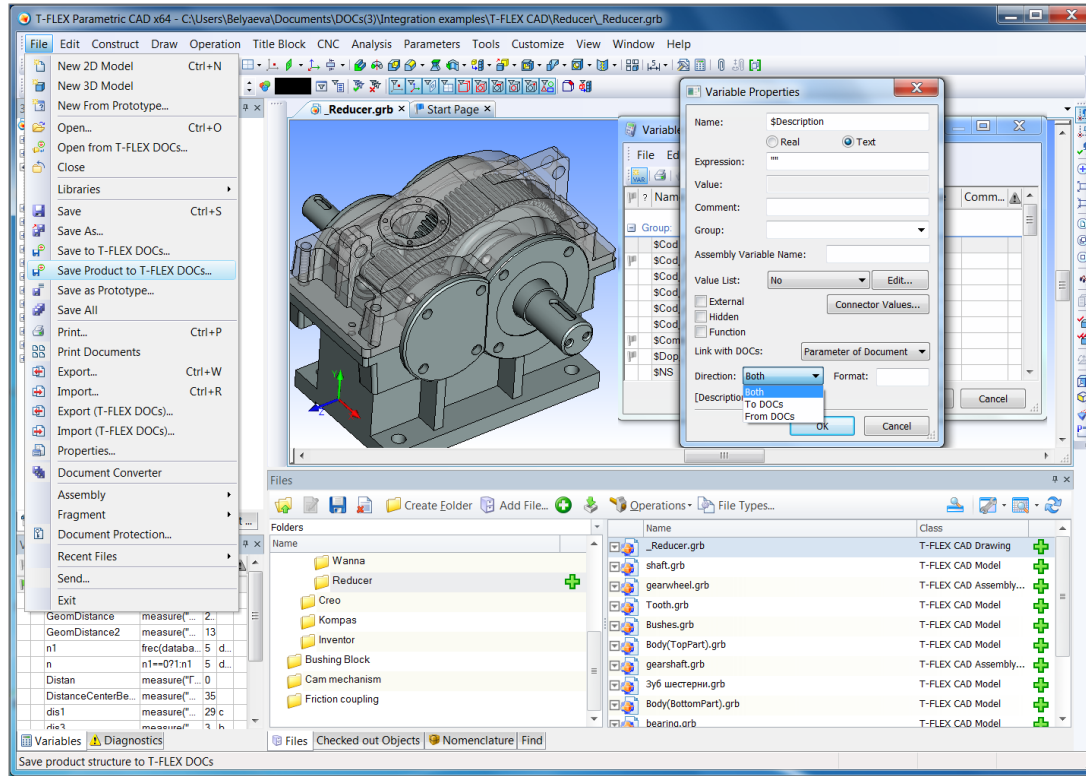
Integration with Various Design Systems

T-FLEX DOCs has modules for integration with almost all popular design systems, including:

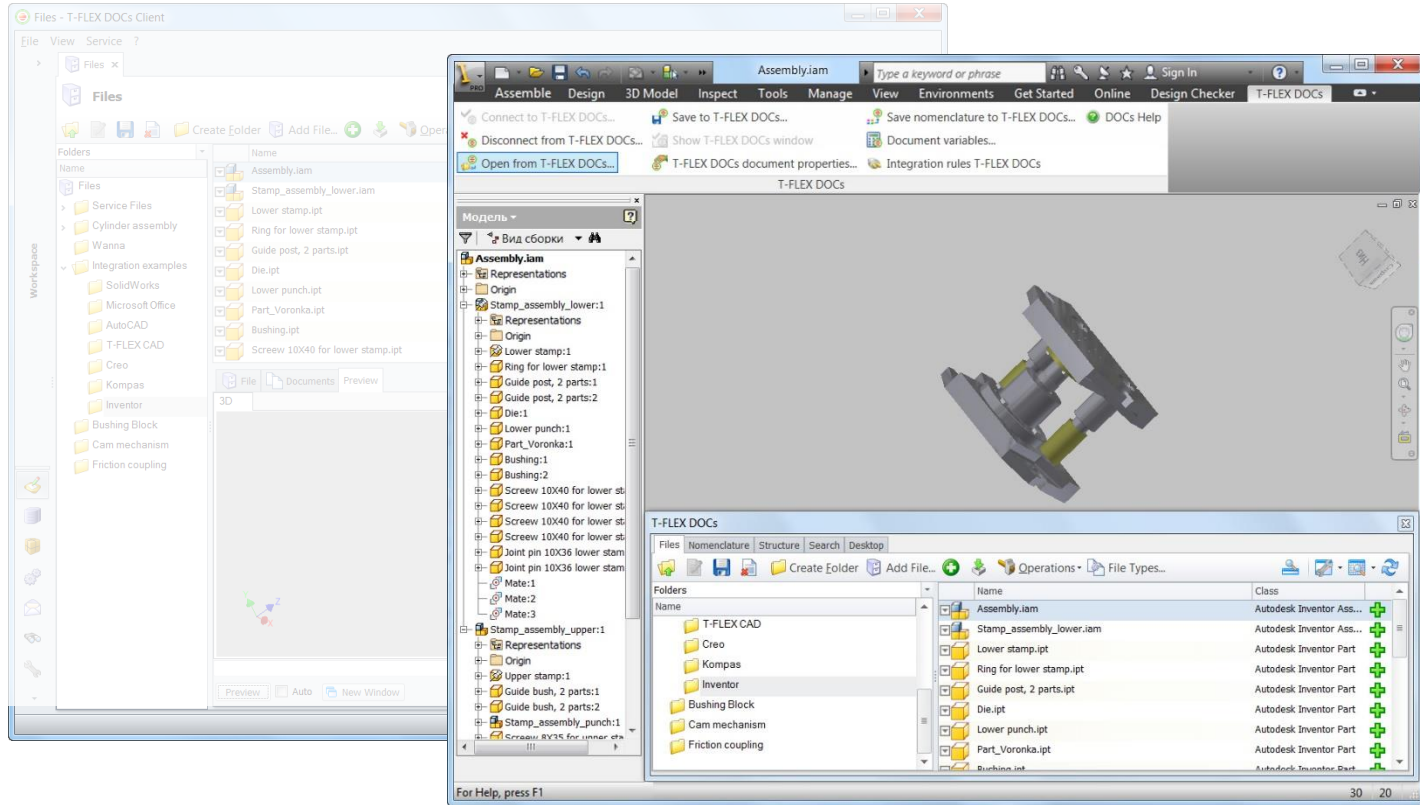
- ✓ T-FLEX CAD
- ✓ SolidWorks
- ✓ Autodesk Inventor
- ✓ AutoCAD
- ✓ PTC Creo
- ✓ Siemens NX
- ✓ CATIA
- ✓ Solid Edge

Integration with T-FLEX CAD supports associative connection by parameters. Values of parameters can be transferred in accordance with the specified rules in various directions: from T-FLEX CAD to T-FLEX DOCs, from T-FLEX DOCs to T-FLEX CAD, and in both directions.

Integration Example (T-FLEX CAD)



Integration Example (Autodesk Inventor)

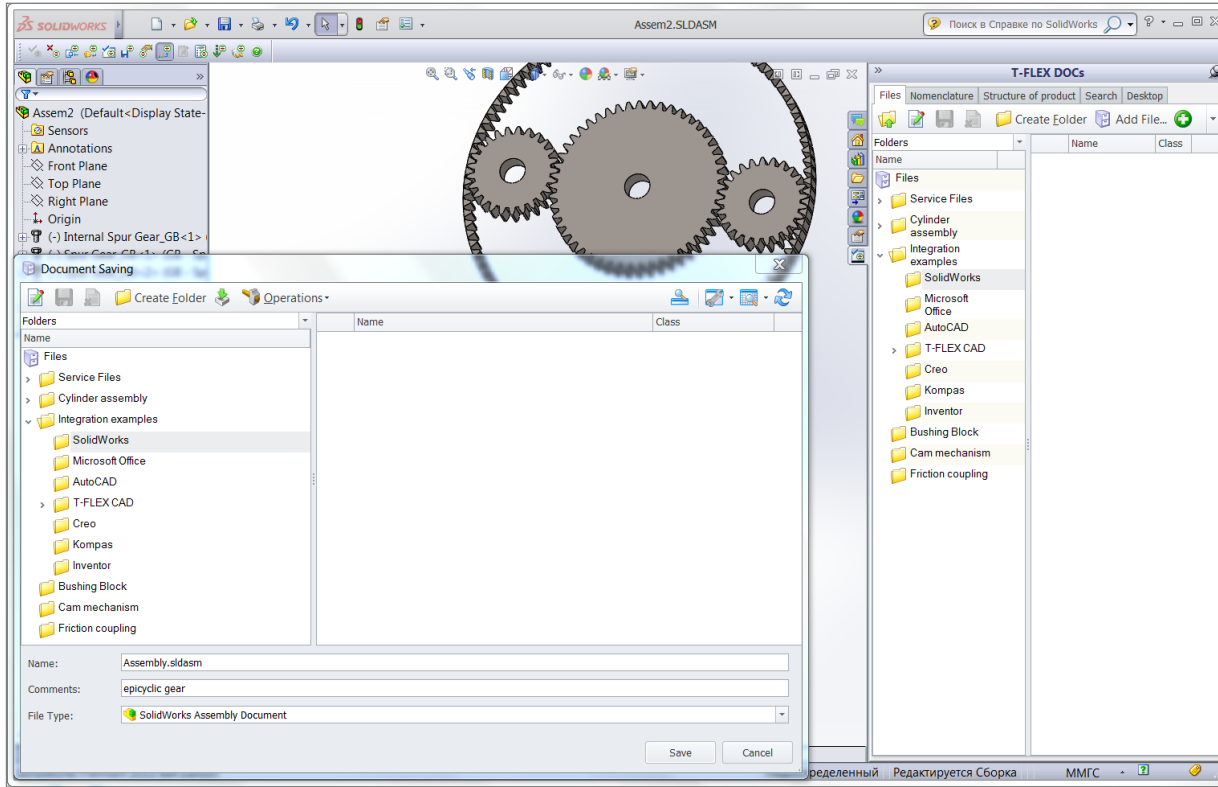


Integration Example (Autodesk Inventor)

The screenshot displays the Autodesk Inventor software interface with the T-FLEX DOCs Client integration. The main window shows a 3D model of a mechanical assembly. The left-hand pane displays a file explorer with a tree view of the assembly structure, including folders like 'Stamp_assembly_lower:1' and 'Stamp_assembly_upper:1'. The right-hand pane shows a BOM (Bill of Materials) table with columns for Name, Identification Number, BOM Group, and Quantity. The table lists various components and their quantities, such as 'Stamp_assembly' (0), 'Bushing' (1), 'Die' (2), 'Guide post' (5), 'Joint pin 10X36' (4), 'Lower punch' (5), 'Lower stamp' (6), 'Part_Voronka' (7), 'Ring for lower stamp' (8), 'Screw 10X40 for lower stamp' (9), 'Stamp_assembly' (0), 'Guid bush 2 parts' (0), 'Joint pin 5X30' (0), 'upper stamp' (0), 'Screw 10X30 for upper stamp' (0), 'Stamp_assem' (0), and 'Upper stamp' (0). The bottom status bar indicates 'Objects Selected: 1' and 'BELVAEVA Administrator Received: 4 MB Sent: 160.98 KB'.

Name	Identification Num...	BOM Group	Quantity	Details
Stamp_assembly		Stamp_assembly	0	
Bushing		Bushing	1	Details
Die		Die	2	Details
Guide post 2 parts		Guide post	5	Details
Joint pin 10X36 lower stamp		Joint pin 10X36 lower stamp	4	Details
Lower punch		Lower punch	5	Details
Lower stamp		Lower stamp	6	Details
Part_Voronka		Part_Voronka	7	Details
Ring for lower stamp		Ring for lower stamp	8	Details
Screw 10X40 for lower stamp		Screw 10X40 for lower stamp	9	Details
Stamp_assembly		Stamp_assembly	0	
Guid bush 2 parts		Guid bush 2 parts	0	Details
Joint pin 5X30 upper stamp		Joint pin 5X30 upper stamp	0	Details
Screw 10X30 for upper stamp		Screw 10X30 for upper stamp	0	Details
Stamp_assem		Stamp_assembly	0	Details
Upper stamp		Upper stamp	0	Details

Integration Example (SolidWorks)

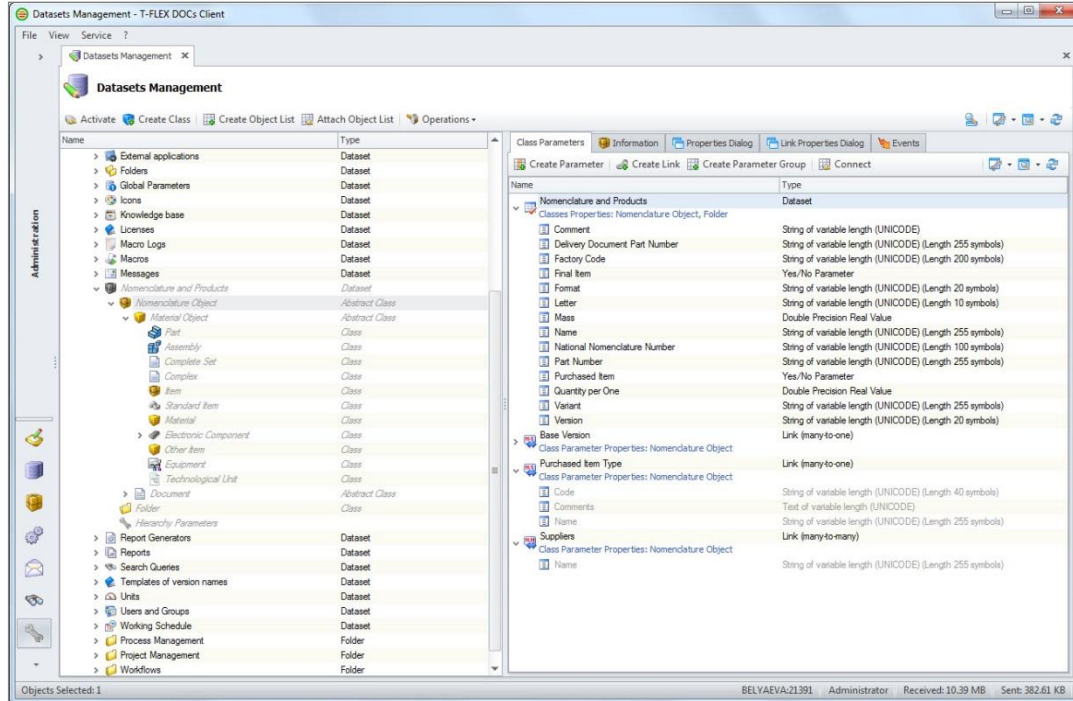


T-FLEX DOCs Tools

Universal tools for creating custom applications based on T-FLEX DOCs

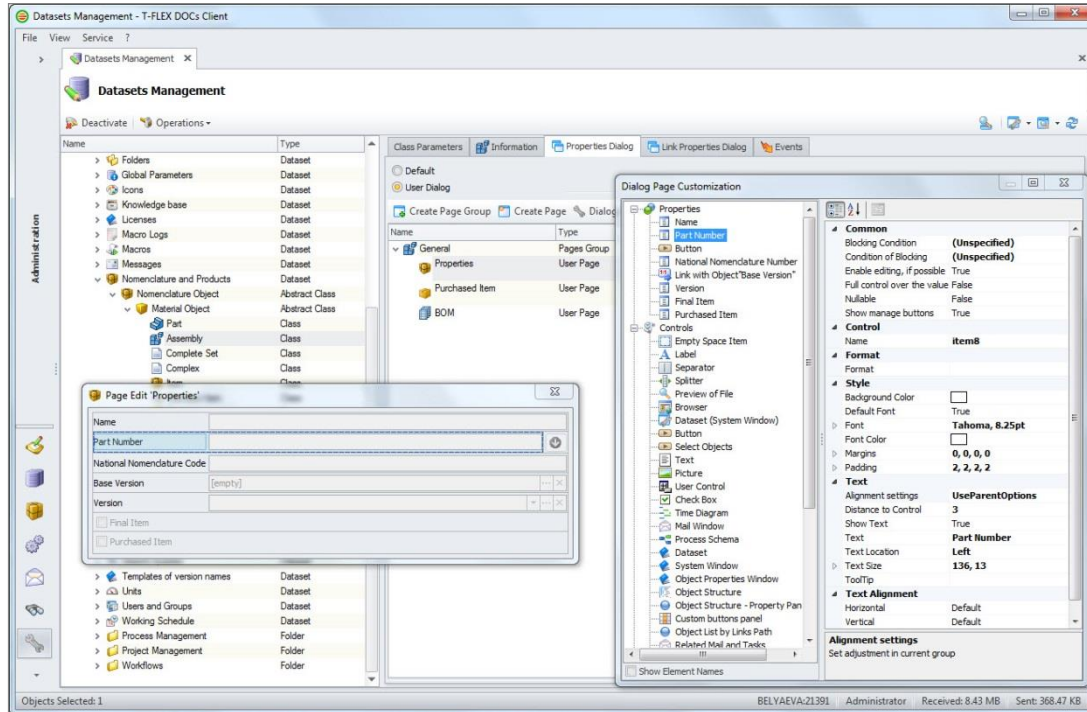
- ✓ Open data structures management
- ✓ Visual design tools, custom user interface
- ✓ Tools to create custom report forms
- ✓ Widespread support for macros
- ✓ Development tools and specialized mechanisms for disabling "extra" functionality
- ✓ Tools for designing workflows (business processes) of any complexity
- ✓ Manual and automatic filtration and styles of data presentation

Data Structures Management



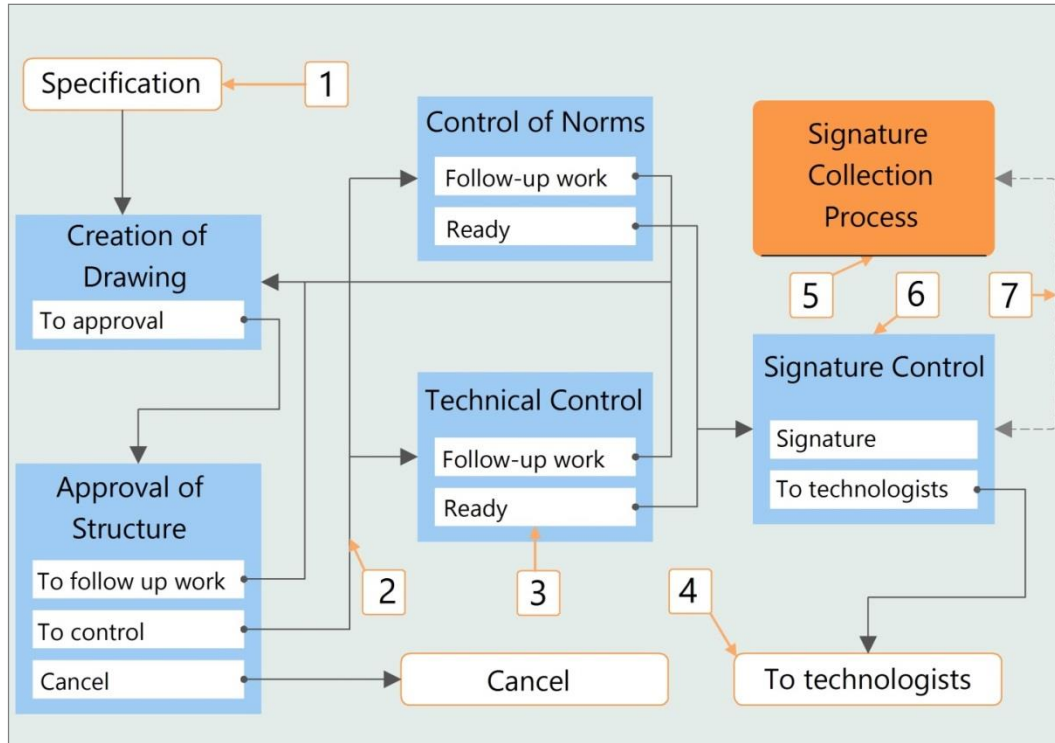
Various levels and types of data structures: datasets, parameters, objects, relations, links, etc.

Creation of Custom Dialogs



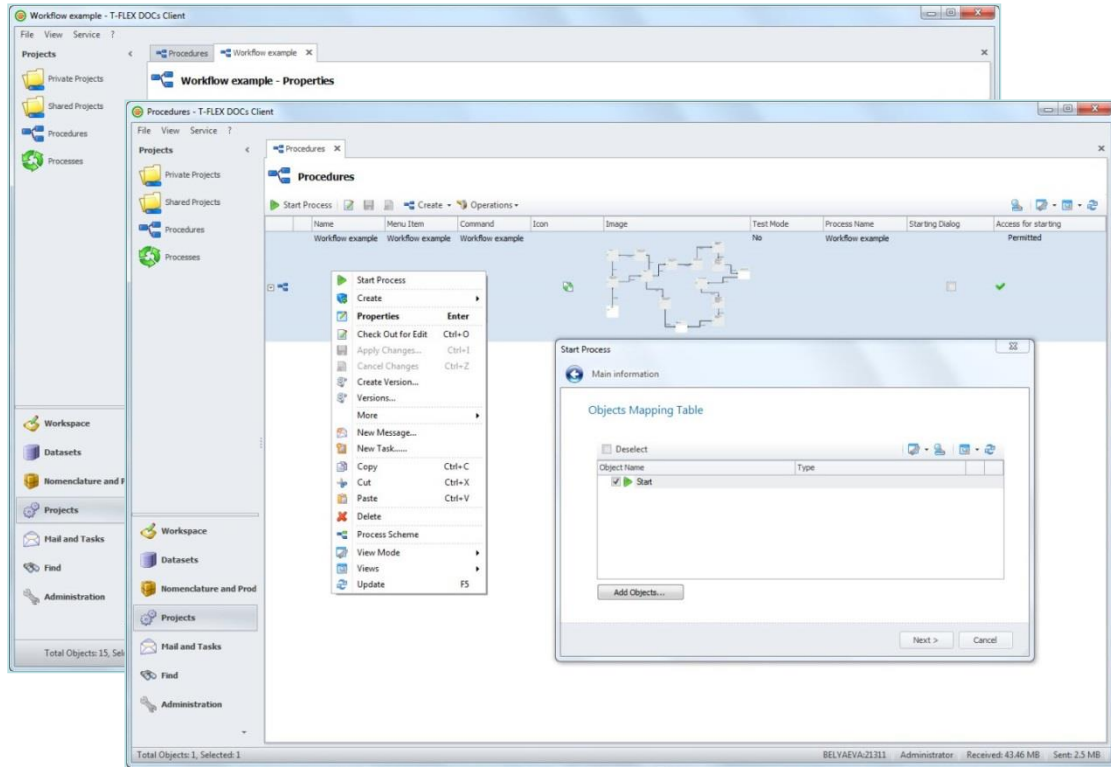
Any data structure may be presented as a window with dialog.

Business Procedure Development



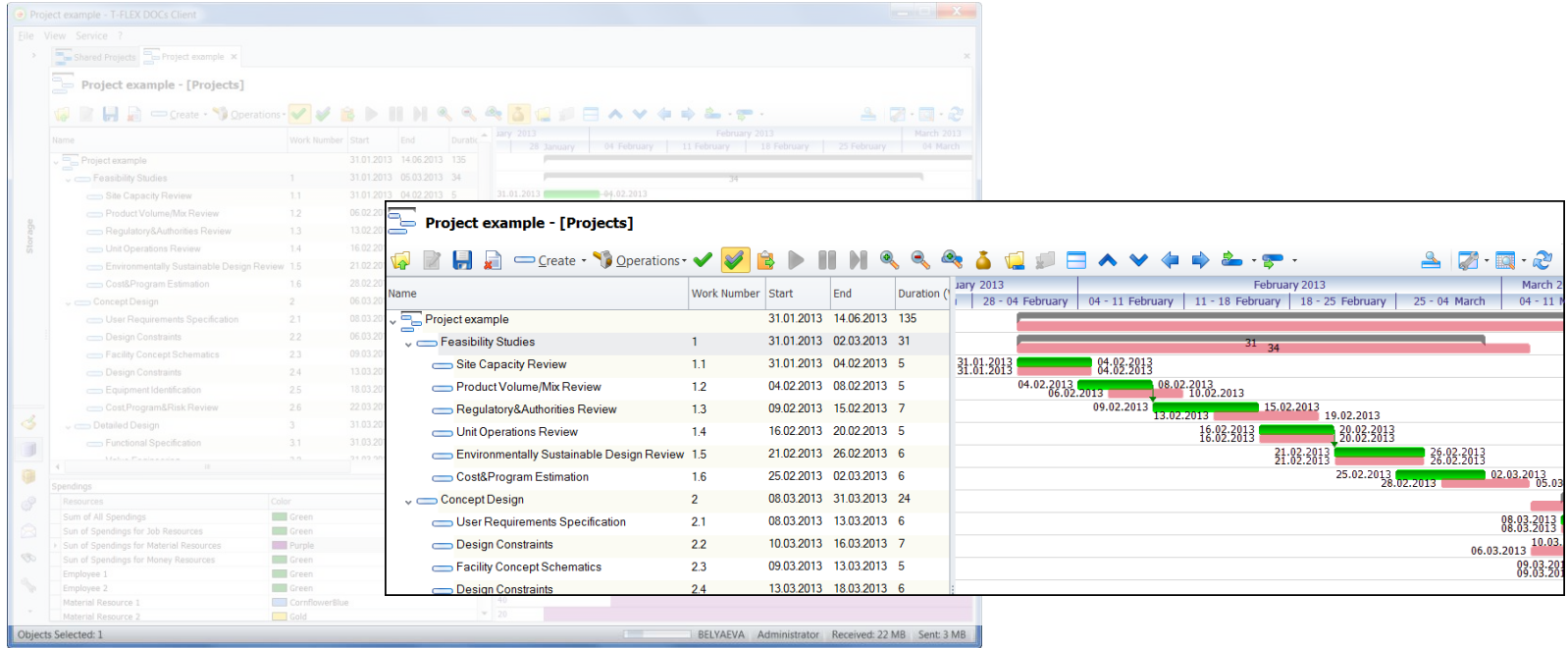
You can make a sketch of logic for system we want to automate, build specific workflow, and apply rules of execution. Further you can correct any process, examine its status.

Business Procedure Development



You can make a sketch of logic for system we want to automate, build specific workflow, and apply rules of execution. Further you can correct any process, examine its status.

Project Management



Leaders will be interested in project management module that supports development of projects of any complexity, scheduling and resources. It is possible not only to development the project, but also run it comparing planned and actual status of the project.

Project Management

The image displays two screenshots of the T-FLEX DOCs Client software interface, illustrating project management capabilities.

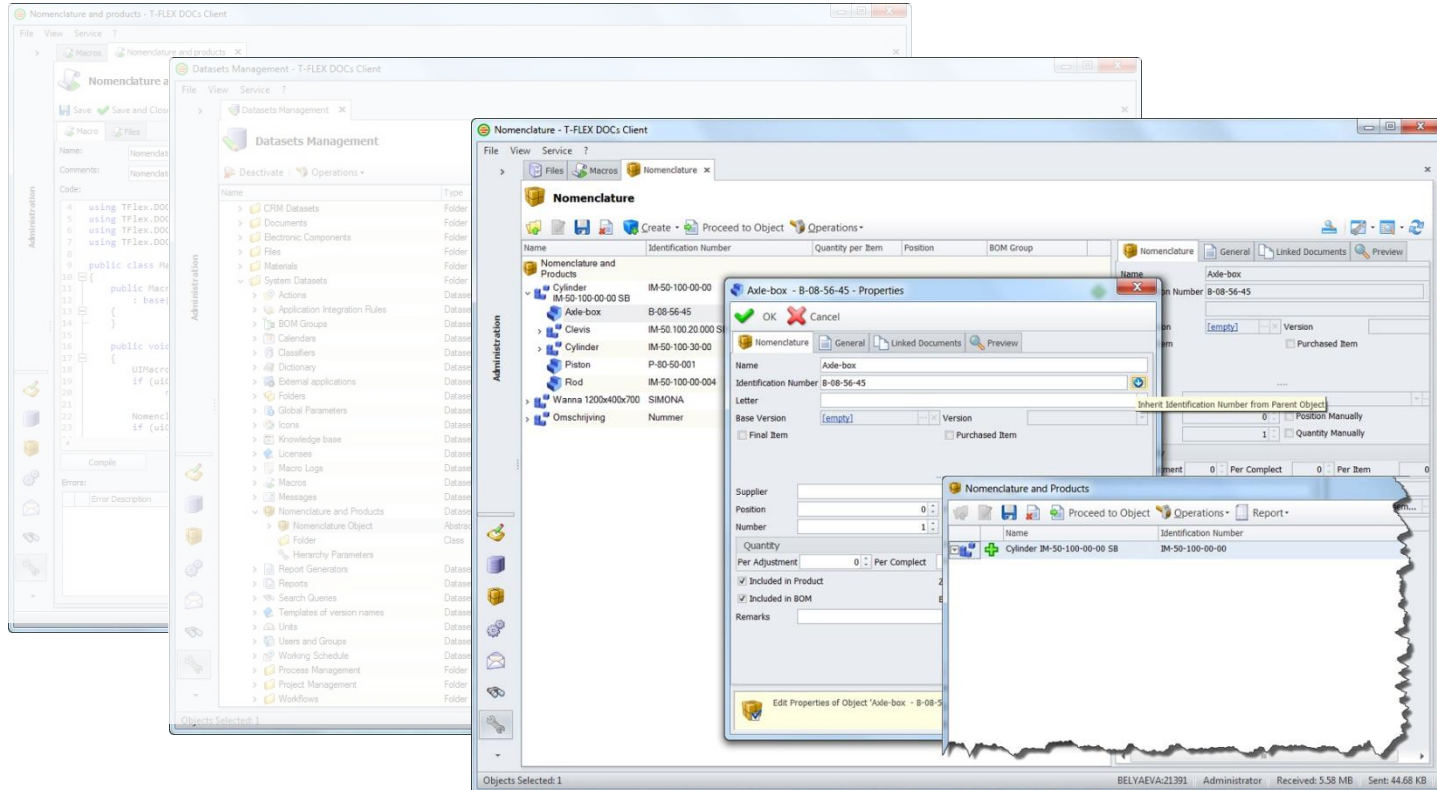
The left screenshot shows the main project view for "Project example - [Projects]". It features a tree view on the left and a table of tasks in the center. The table lists tasks such as Feasibility Studies, Concept Design, and Detailed Design, with columns for Name, Work Number, Start, and End. A "Spending" section at the bottom shows resource allocation for various categories like "Sum of All Spendings" and "Employee 1".

The right screenshot shows the same interface with a "New Task" dialog box open. The dialog displays task details for "Task 'Project example'", including the start time (31.01.2013 0:00), end time (14.06.2013 0:30), importance (Medium), and status (Not Started). The dialog also shows a "Message" field with the text "Task is linked with 'Project example' of Project 'Project example'".

On the far right, a Gantt chart is partially visible, showing a timeline with bars representing task durations and dates ranging from March 2013 to May 2013.

Leaders will be interested in project management module that supports development of projects of any complexity, scheduling and resources. It is possible not only to development the project, but also run it comparing planned and actual status of the project.

Custom Development with Macro



Conclusion ... on T-FLEX DOCs

ENGINEERING PROCESSED AND DESIGN MANAGEMENT

CUSTOMIZED INFORMATION SYSTEM

INTEGRATION WITH MAJOR MCAD SYSTEMS

GENERAL OFFICE AND DESK WORKFLOW

T·FLEX DOCs
UNIFIED PROTECTED STORAGE
OF ENTERPRISE DATA

PRODUCT STRUCTURE MANAGEMENT, BILLOF
MATERIALS, CORPORATE DATA AND CLASSIFIERS

ENTERPRICE KNOWLEDGE MANAGEMENT AND ARCHIVE

MANAGING COMPANY PRODUCT RANGE, CORPORATE
DATA AND CLASSIFIERS

PROJECT MANAGEMENT, COST AND RESOURCE PLANING

MAIL AND TASKS, WORKFLOW MANAGMENT

INTEGRATION WITH ERP SYSTEMS

T-FLEX DOCs is powerful full-featured PLM solution for solving various tasks of enterprise automation.

T·FLEX DOCs



T·FLEX PLM

For more information about T-FLEX CAD
and other Top Systems' products
you may contact directly our company
or any regional representative

www.tflex.com | tflex@topsystems.ru

CONTACT US

 **TOP
SYSTEMS**